

# NIMPKISH THLB STABILIZATION PROJECT November 24, 2016



Western Forest Products Inc.  
DEFINING A HIGHER STANDARD™



## AGENDA

### Summary of San Josef THLB Stabilization Pilot

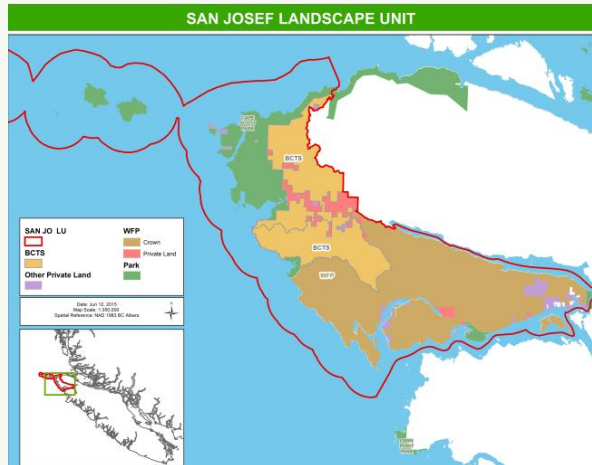
- San Josef Landscape Unit
- Decision Framework
- Results
- Status
- Learnings

### Englewood THLB Stabilization Project Proposal

- Background
- What makes Englewood a good candidate



## SAN JOSEF LANDSCAPE UNIT



- 196,000 ha
- PPA: 26,000 ha
- WFP : 47,000 ha
- BCTS: 24,000 ha
- Reconfiguration of Old Growth Management Areas (OGMA)
- Original OGMA plan – 2005
- CWHvh1, vm1, vm2; MHmm1

November 2016

2



## VALUES

- Productive Forest
  - 141-250 years
  - >250 years (old growth)
- First Nations
  - Cw volume – vm1 and SI  $\geq 15$
- Marbled Murrelet Nesting habitat
  - Nesting Habitat by rank
  - Interior Habitat
- Goshawk
  - Nesting and Foraging Habitat
- Forest Interior
- Karst
  - Recreational Karst Importance
  - Geological Formation
- Wildlife Features
  - E.g., eagle nest
- Visuals
  - EVQOs
- Impacts
  - THLB (current TSR)
  - Harvestable area

November 2016

3



## DECISION FRAMEWORK

- Identify Pilot/Project Area
- Determine primary and secondary values/metrics
- Develop GIS resultant layer for values/metrics
- Assess “harvestability” of legal OGMA’s
- Identify “non-harvestable” area outside legal OGMA’s
- Analysis
- Review and Decision

November 2016

4



## RESULTS

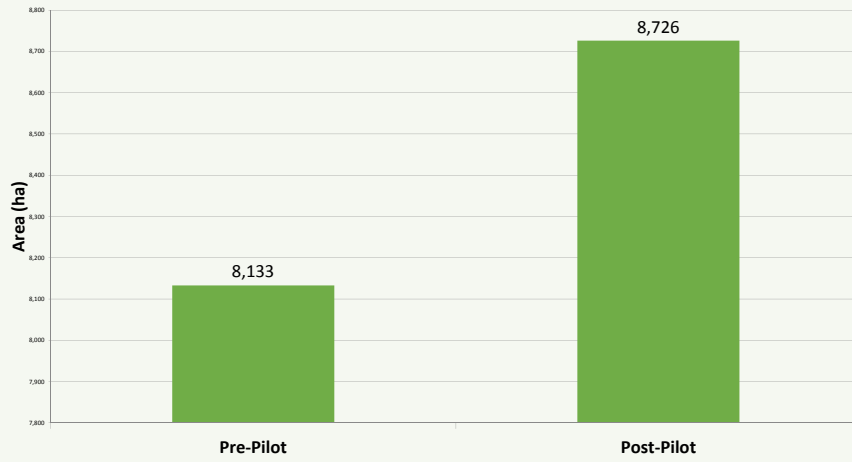
- Positive result for all key values

November 2016

5



## RESULTS - PRODUCTIVE OLD FOREST

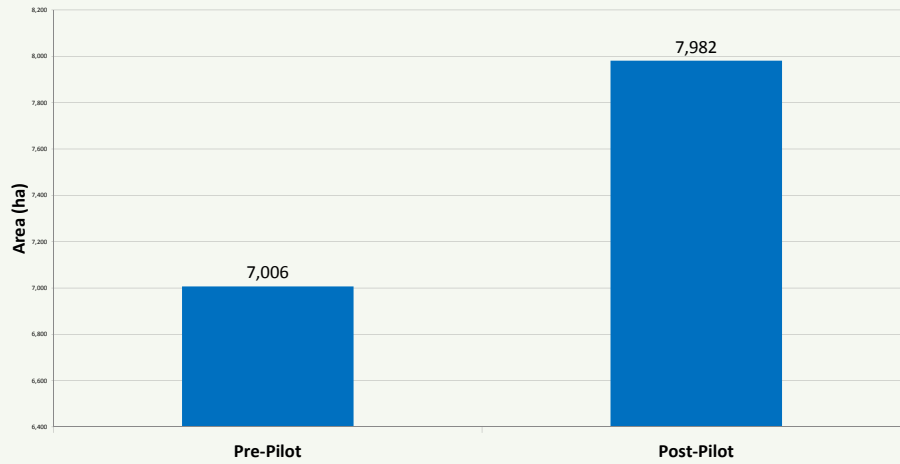


November 2016

6



## RESULTS - FOREST INTERIOR

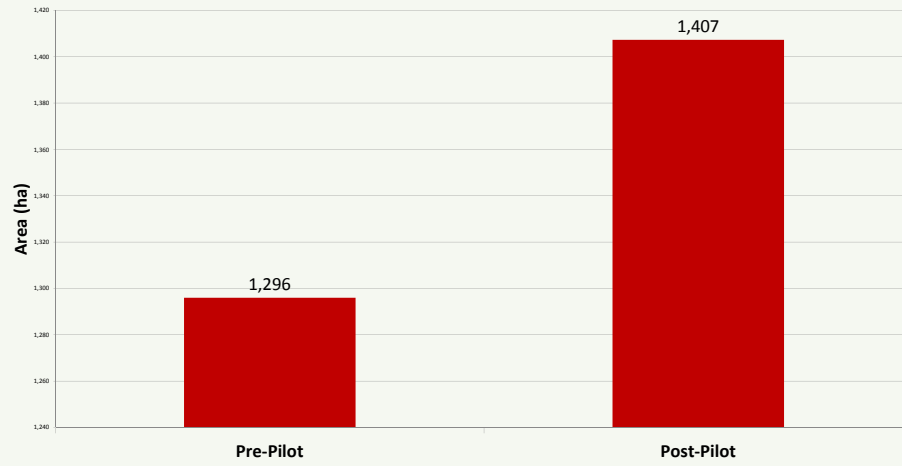


November 2016

7



## RESULTS - MARBLED MURRELET NESTING HABITAT

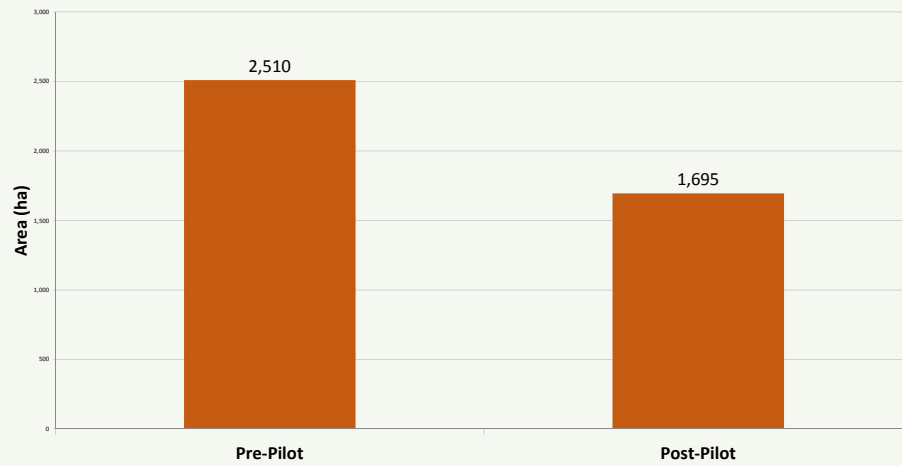


November 2016

8



## RESULTS - HARVESTABLE AREA IN OGMAS



November 2016

9



## LEARNINGS

What worked:

- Early discussions with First Nations to incorporate their interests
- Start-up meeting with FLNR, BCTS, WFP
- Collaboration between First Nations, FLNR, BCTS, WFP to identify evaluation criteria (values)
- Monthly update calls
- Base decisions on harvestability (defined by WFP planner), not model
- Dedicated project lead
- Datasets available or developed for all values

November 2016

10



## SAN JOSEF PILOT - SUMMARY

- Successful
  - Positive outcome from socio-economic and conservation perspectives
- Opportunity for additional similar projects or pilot expansion
  - Each LU will have different issues and values
- Opportunity for specific wildlife targets for future projects

November 2016

11



# ENGLEWOOD THLB STABILIZATION PROJECT

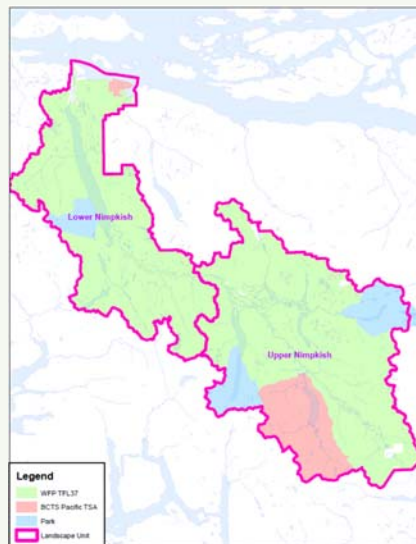


November 2016

12



# ENGLEWOOD PROJECT AREA



November 2016

13



## WHAT MAKES ENGLEWOOD A GOOD CANDIDATE?

- Over 10 years since the development of existing OGMA plans.
- Improved Species at Risk planning opportunities.
- Increased knowledge of harvestable land base.



November 2016

14



## EXISTING LANDSCAPE UNIT PLANS

Upper Nimpkish (2005)

Lower Nimpkish (2005)



November 2016

15





## NEW DATA

- Light Detection and Ranging (LiDAR)
- Marbled Murrelet Nesting Habitat
- Goshawk Nesting and Foraging Data
- Karst Sites
- Wildlife features (eagle nests, bear dens)
- Riparian Inventory
- Operability constraints
- Ortho-imagery

November 2016

16



## SPECIES AT RISK

### Marbled Murrelet

- Low Level Aerial Survey (LLAS) inventory 2012
- Anticipated BC Implementation Plan
  - WFP can provide THLB and AAC impacts for different retention scenarios

November 2016

17



# QUESTIONS/DISCUSSION



**Western Forest Products Inc.**  
DEFINING A HIGHER STANDARD™

